



ATHENS

Exchange Program Survey

March 2016



Athens survey
March 2016

SURVEY GOALS

To take stock of **ATHENS Program sessions**, which take place twice a year during March and November, aiming to achieve continuous quality improvement of the **Instituto Superior Técnico** exchange programs.

Commissioned by the **Student Support Unit (NAPE)**, in charge of the organization and coordination of the cultural program and students social integration, in cooperation with the **International Area (AI)**, the survey brings together issues that intend to measure students motivation and preparation, cultural activities and programme satisfaction, and acquired knowledge by the participants.

To measure participants' satisfaction level and possible improvements in **ATHENS Program sessions**.



DATA COLLECTION

Athens survey
March 2016

Survey method

Online survey.

Number of participants

Respondents are all participants in the sessions of the ATHENS exchange program - students from European universities, aged between 18 and 25.
March 2016: 29 participants in ATHENS exchange program.

Survey conduction

Conducted to each session of the ATHENS exchange program, immediately after the program (18th March) with a deadline of seven days for the submission of responses.

The response rate was 83% (24 responses).

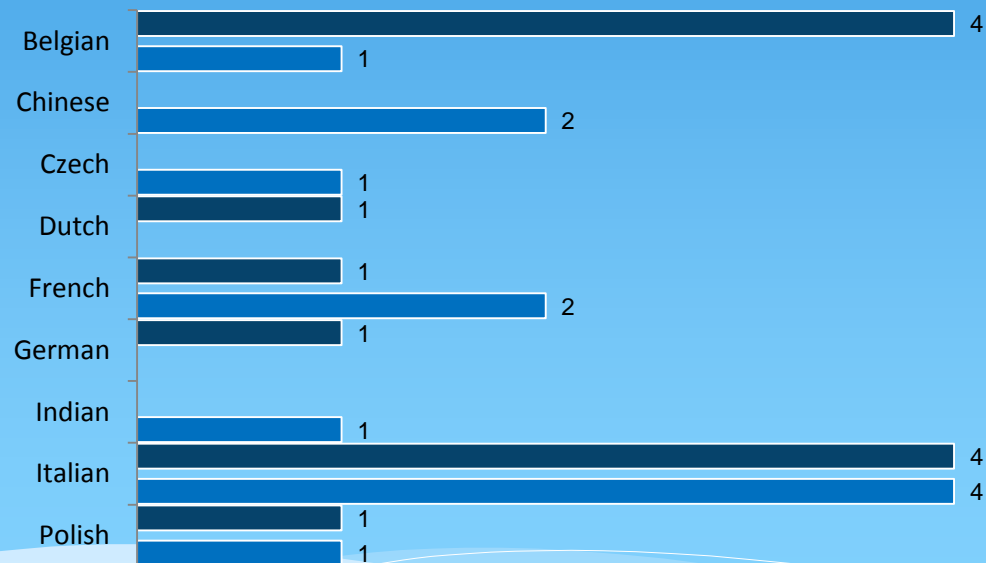


RESULTS AND ANALYSIS

1. MOTIVATION AND PREPARATION

1.1. Which course did you take

Nacionality



■ IST3 - Operational Research (TOTAL= 12 responses)

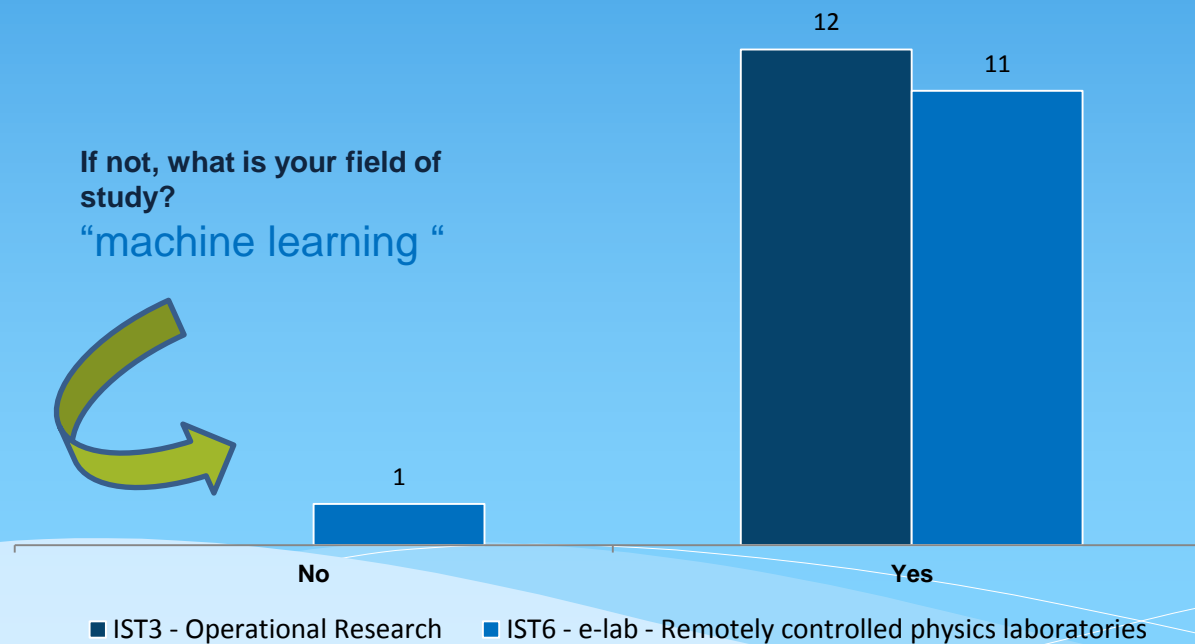
■ IST6 - e-lab - Remotely controlled physics laboratories (TOTAL= 12 responses)



RESULTS AND ANALYSIS

1. MOTIVATION AND PREPARATION

1.2. The course you took is related to your field of study (number)



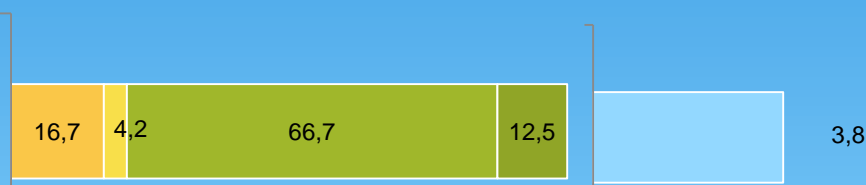


RESULTS AND ANALYSIS

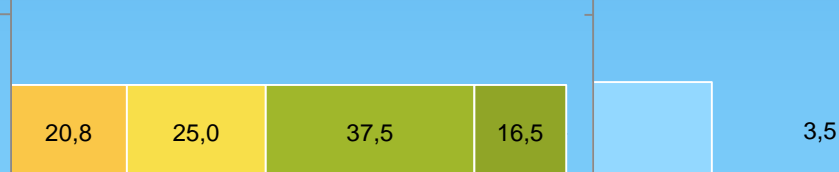
2. COURSE ORGANISATION

Scale from 1 to 5 (1= Strongly disagree , 5 = Strongly agree)

2.1. The objectives and requirements of this course were clear



2.2. The content of the course corresponds to the initially defined objectives.



■ Série1 ■ Série2 ■ Série3 ■ Série4 ■ Série5

□ Average



RESULTS AND ANALYSIS

2. COURSE ORGANISATION

Scale from 1 to 5 (1= Strongly disagree , 5 = Strongly agree)

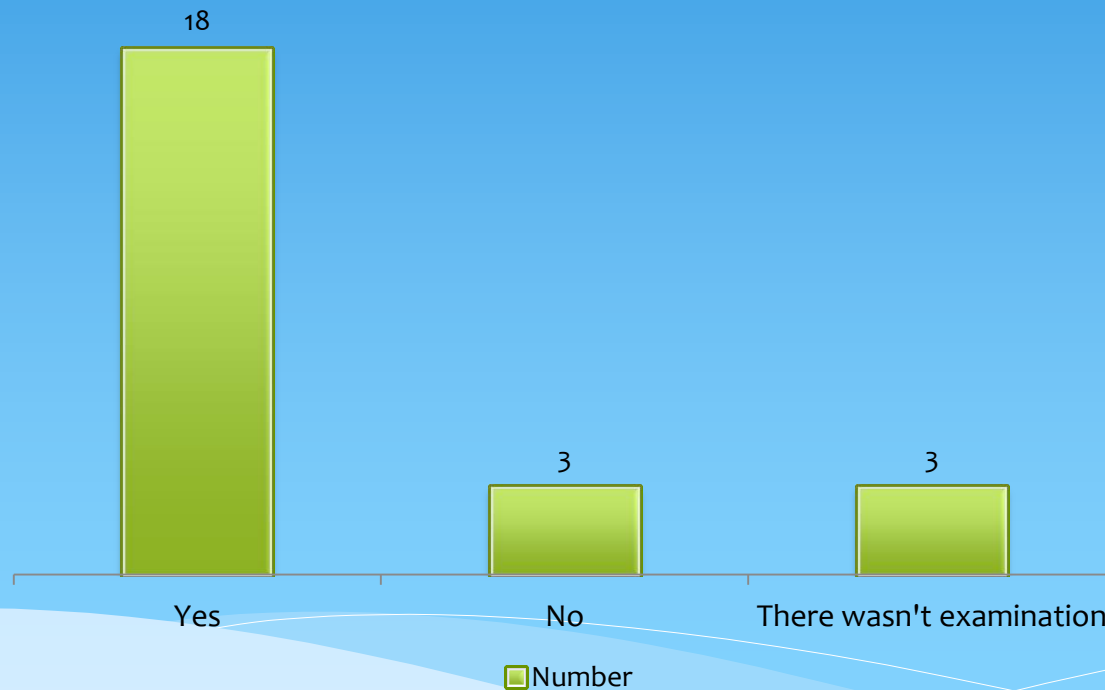
2.1. The objectives and requirements of this course were clear.	% resp. 1	% resp. 2	% resp. 3	% resp. 4	% resp. 5
IST3 - Operational Research			8,3	75,0	16,7
IST6 - e-lab - Remotely controlled physics laboratories		33,3		58,3	8,3
TOTAL		16,7	4,2	66,7	12,5
2.2. The content of the course corresponds to the initially defined objectives.	% resp. 1	% resp. 2	% resp. 3	% resp. 4	% resp. 5
IST3 - Operational Research		16,7	16,7	50,0	16,7
IST6 - e-lab - Remotely controlled physics laboratories		25,0	33,3	25,0	16,7
TOTAL		20,8	25,0	37,5	16,7



RESULTS AND ANALYSIS

2. COURSE ORGANISATION

2.3. Were you satisfied with the type of examination?

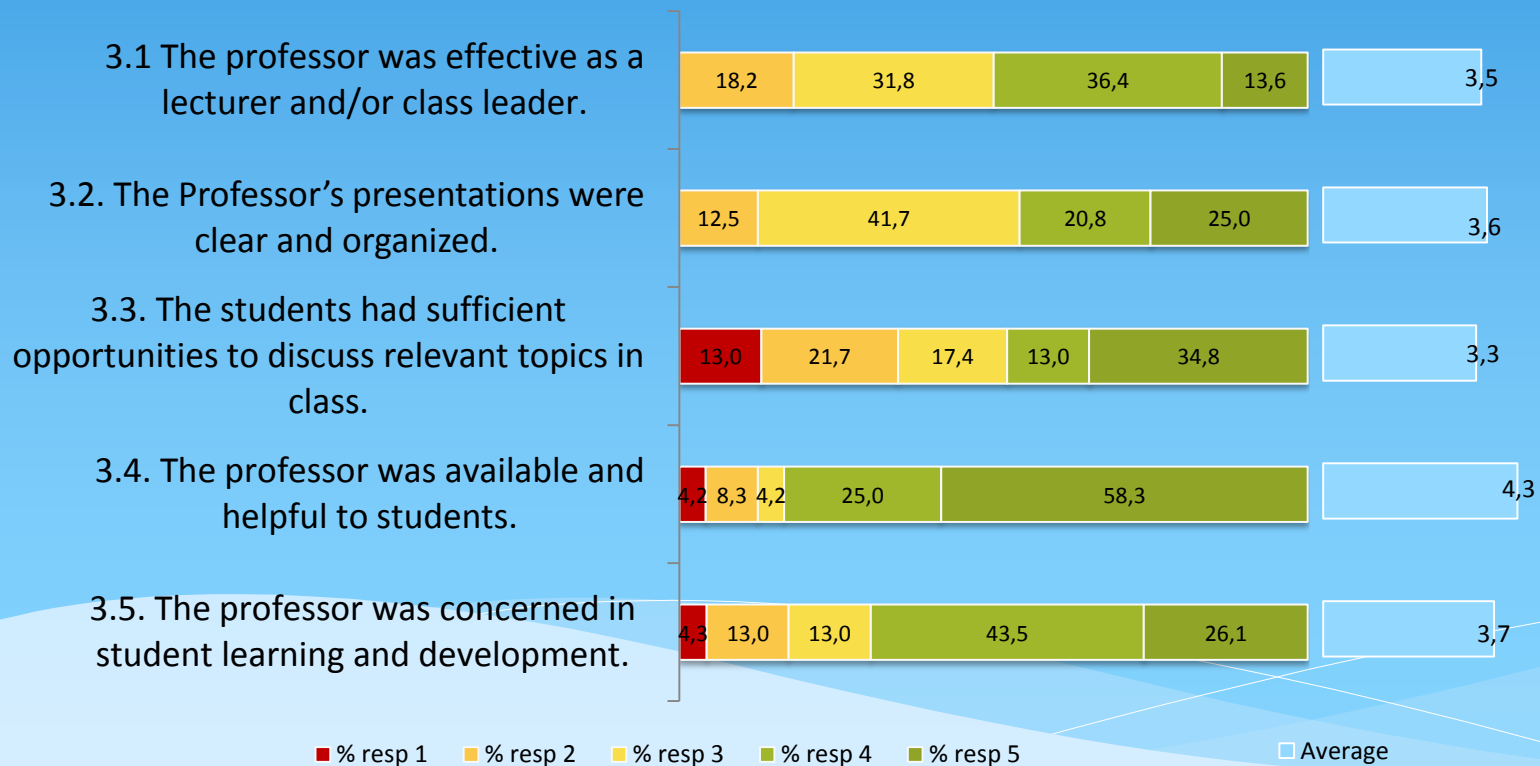




RESULTS AND ANALYSIS

3. PROFESSOR RESPONSIBILITY AND SKILLS

Scale from 1 to 5 (1= Strongly Disagree, 5=Strongly Agree)





RESULTS AND ANALYSIS

3. PROFESSOR RESPONSIBILITY AND SKILLS

Scale from 1 to 5 (1= Strongly Disagree, 5=Strongly Agree)

	% resp. 1	% resp. 2	% resp. 3	% resp. 4	% resp. 5
3.1 The professor was effective as a lecturer and/or class leader.					
IST3 - Operational Research		8,3	33,3	41,7	16,7
IST6 - e-lab - Remotely controlled physics laboratories		30,0	30,0	30,0	10,0
TOTAL		18,2	31,8	36,4	13,6
3.2. The Professor's presentations were clear and organized.					
IST3 - Operational Research		8,3	41,7	16,7	33,3
IST6 - e-lab - Remotely controlled physics laboratories		16,7	41,7	25,0	16,7
TOTAL		12,5	41,7	20,8	25,0
3.3. The students had sufficient opportunities to discuss relevant topics in class.					
IST3 - Operational Research	8,3	16,7	25,0	16,7	33,3
IST6 - e-lab - Remotely controlled physics laboratories	18,2	27,3	9,1	9,1	36,4
TOTAL	13,0	21,7	17,4	13,0	34,8
3.4. The professor was available and helpful to students.					
IST3 - Operational Research			8,3	25,0	66,7
IST6 - e-lab - Remotely controlled physics laboratories	8,3	16,7		25,0	50,0
TOTAL	4,2	8,3	4,2	25,0	58,3
3.5. The professor was concerned in student learning and development.					
IST3 - Operational Research			18,2	54,5	27,3
IST6 - e-lab - Remotely controlled physics laboratories	16,7	8,3	25,0	25,0	25,0
TOTAL	4,3	13,0	13,0	43,5	26,1

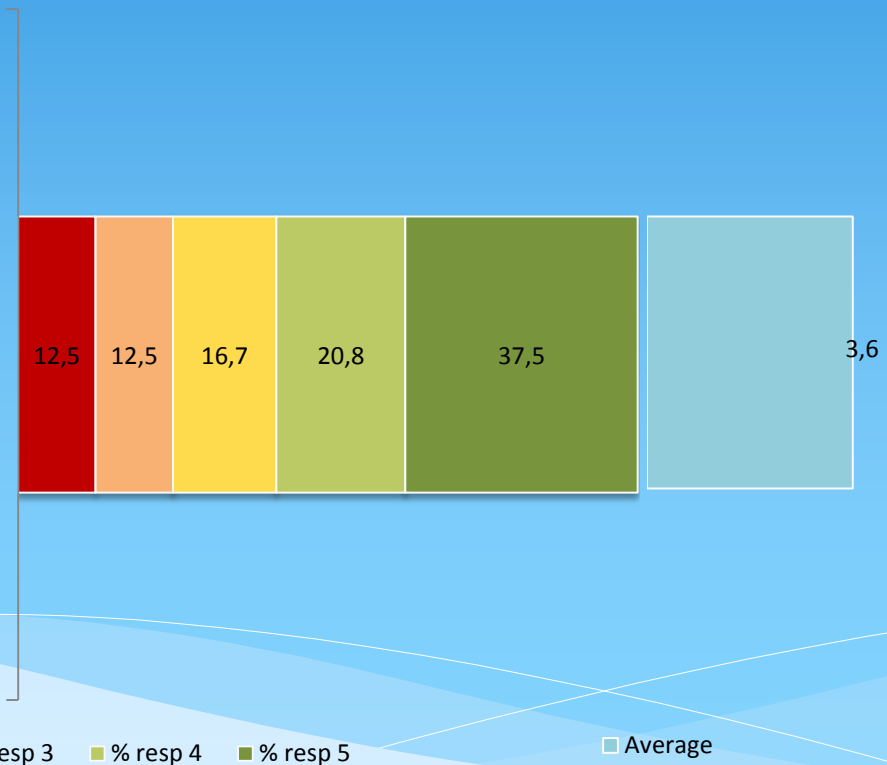


RESULTS AND ANALYSIS

4. GENERAL CONDITIONS

Scale from 1 to 5 (1= Strongly Disagree, 5=Strongly Agree)

4.1 Classroom setup and equipment were suitable for this course.





RESULTS AND ANALYSIS

4. GENERAL CONDITIONS

Scale from 1 to 5 (1= Strongly Disagree, 5=Strongly Agree)

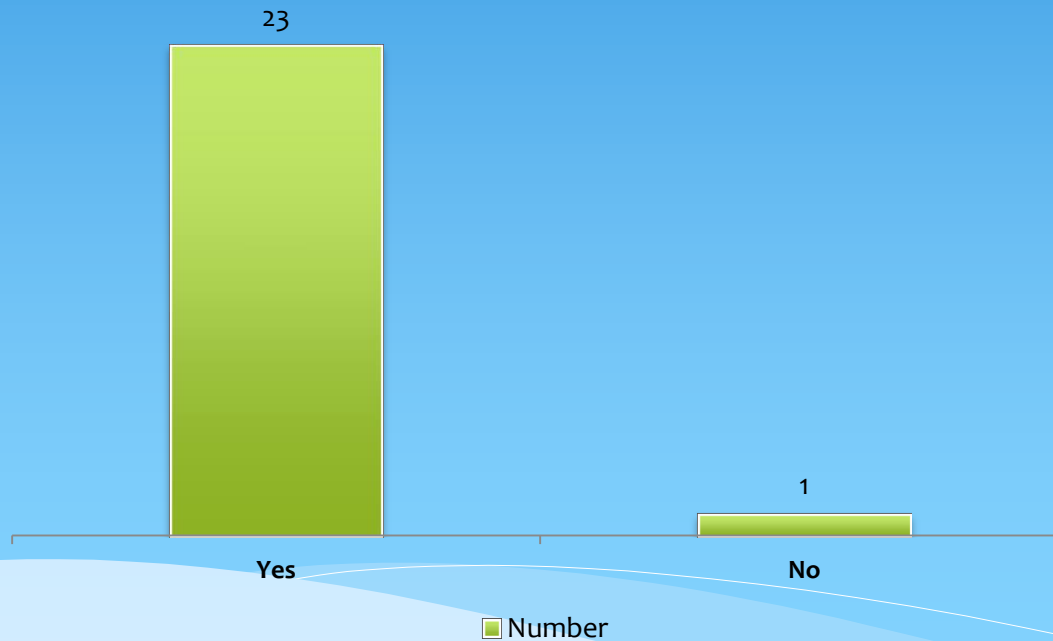
4.1 Classroom setup and equipment were suitable for this course	% resp. 1	% resp. 2	% resp. 3	% resp. 4	% resp. 5
IST3 - Operational Research	16,7	8,3	25,0	25,0	25,0
IST6 - e-lab - Remotely controlled physics laboratories	8,3	16,7	8,3	16,7	50,0
TOTAL	12,5	12,5	16,7	20,8	37,5



RESULTS AND ANALYSIS

4. GENERAL CONDITIONS

4.2. Did you stay at the Accommodation suggested by ATHENS programme?



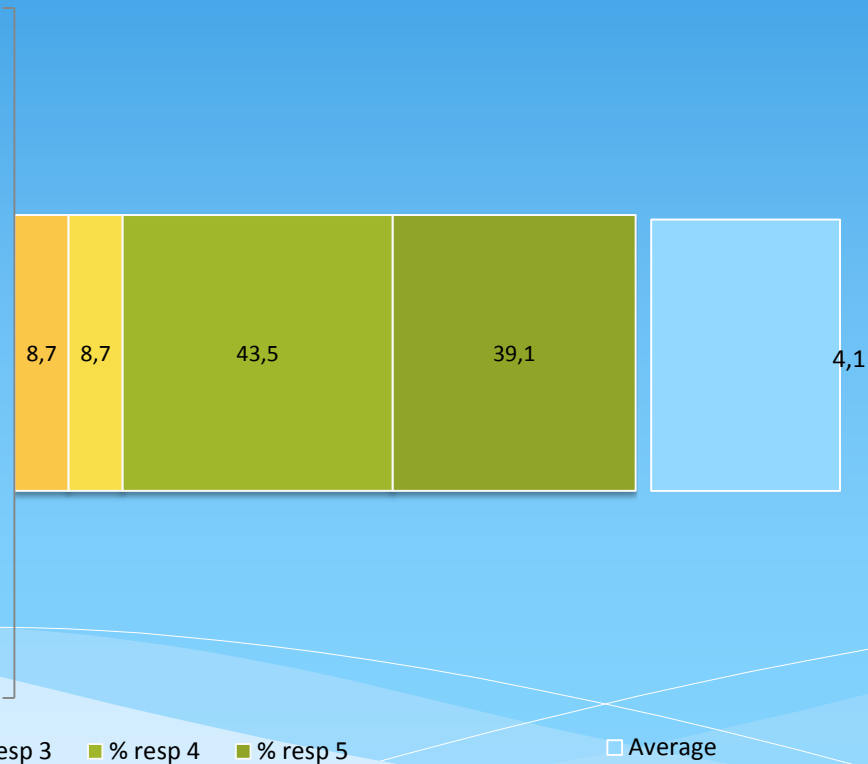


RESULTS AND ANALYSIS

4. GENERAL CONDITIONS

Scale from 1 to 5 (1= Strongly Disagree, 5=Strongly Agree)

4.2.1 The provided accommodation had a good price/quality relation.



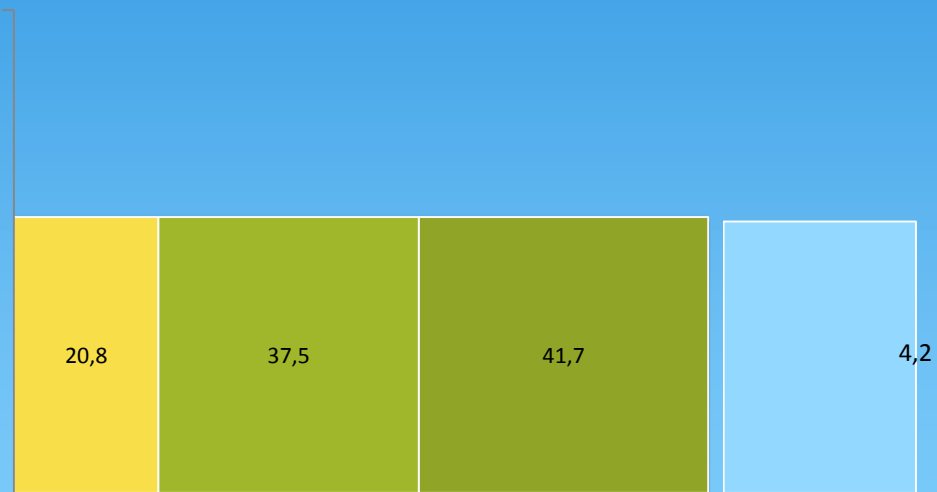


RESULTS AND ANALYSIS

4. GENERAL CONDITIONS

Scale from 1 to 5 (1= Strongly Disagree, 5=Strongly Agree)

4.3. Overall I am satisfied with NMCI support during the time I was in IST.



■ % resp 1 ■ % resp 2 ■ % resp 3 ■ % resp 4 ■ % resp 5 □ Average

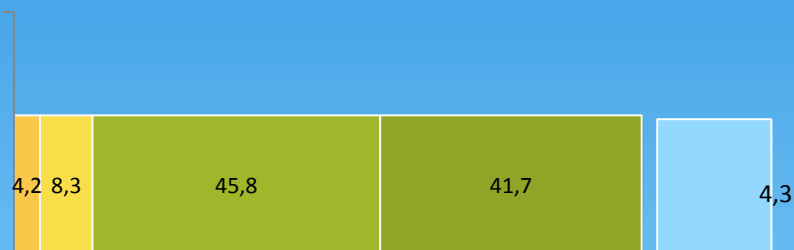


RESULTS AND ANALYSIS

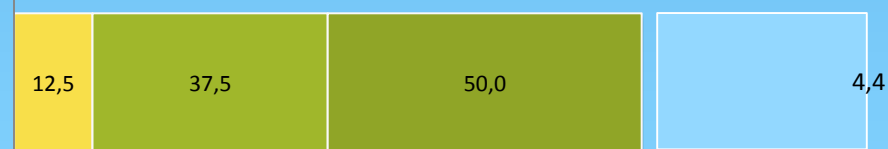
5. CULTURAL ACTIVITIES

Scale from 1 to 5 (1= Strongly Disagree, 5=Strongly Agree)

5.1. Overall I am satisfied with the Cultural Weekend.



5.2. The presentation about Portugal and Técnico was clear and organized.



■ % resp 1 ■ % resp 2 ■ % resp 3 ■ % resp 4 ■ % resp 5 □ Average



RESULTS AND ANALYSIS

5. CULTURAL ACTIVITIES

5.3. How would you improve the Cultural Weekend?

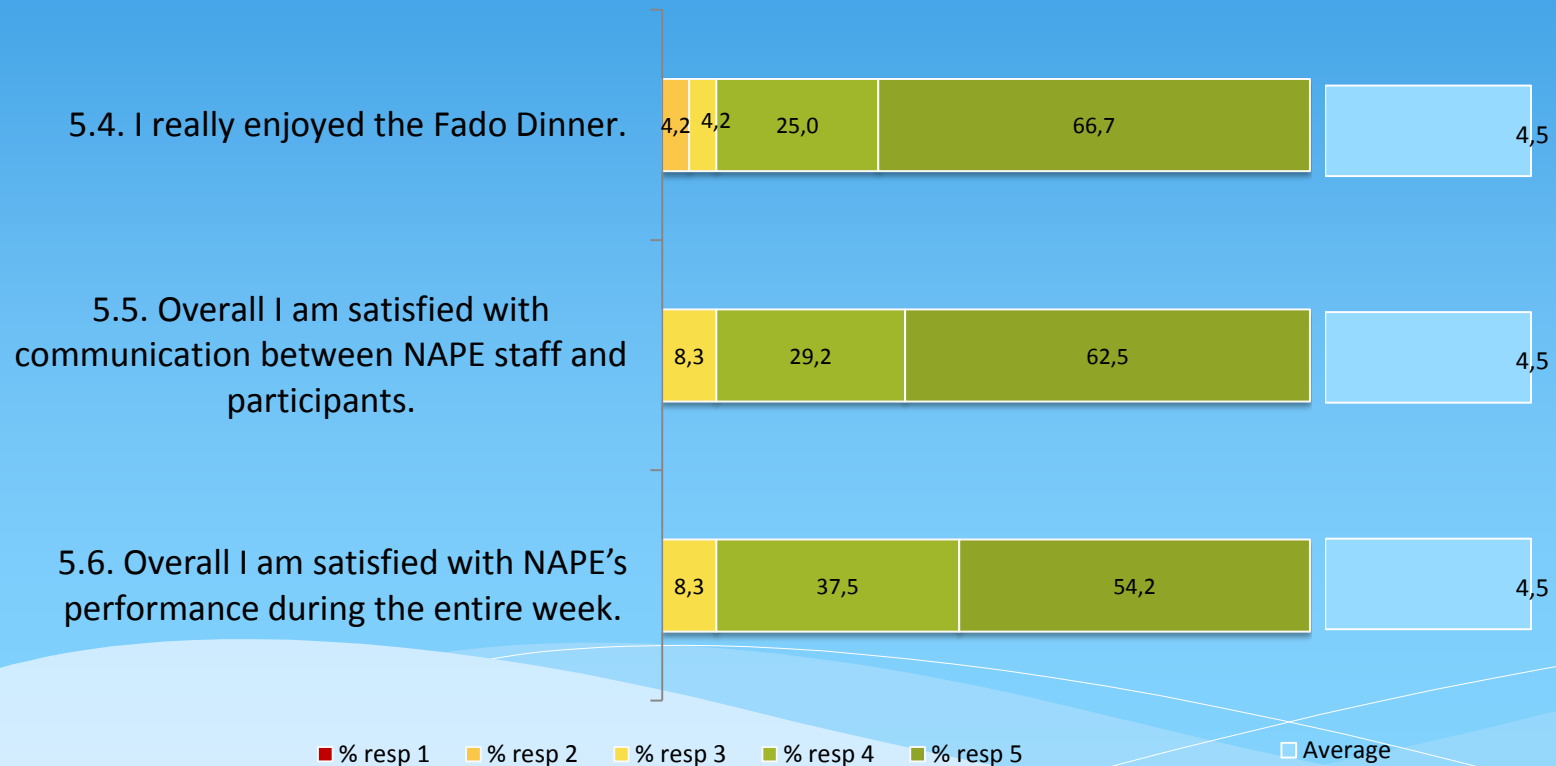
- the time we spend in the castle on Saturday was too much, we could have seen the whole castle in 30 minutes. In Sintra the supervisor told us that the entrance to the castle is free, after going up for 30 minutes we saw the entrance is 8€ per pers.
- Do more besides just sightseeing. Maybe activities like surfing or games that will lead to more interaction.
- More time at each site.
- Was perfect.
- More cultural information. More history. More knowledge..



RESULTS AND ANALYSIS

5. CULTURAL ACTIVITIES

Scale from 1 to 5 (1= Strongly Disagree, 5=Strongly Agree)



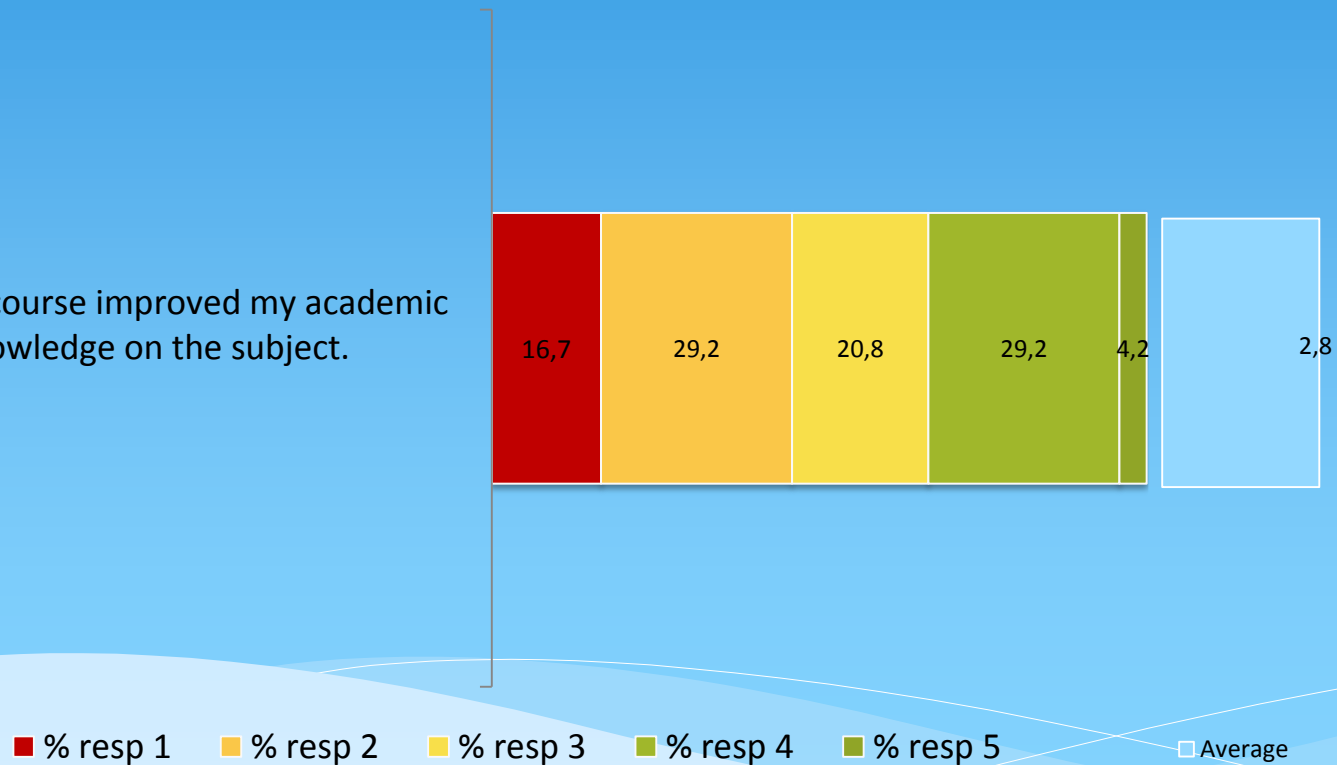


RESULTS AND ANALYSIS

6. GENERAL IMPRESSION

Scale from 1 to 5 (1= Strongly Disagree, 5=Strongly Agree)

6.1. This course improved my academic knowledge on the subject.





RESULTS AND ANALYSIS

6. GENERAL IMPRESSION

Scale from 1 to 5 (1= Strongly Disagree, 5=Strongly Agree)

6.1. This course improved my academic knowledge on the subject.	% resp. 1	% resp. 2	% resp. 3	% resp. 4	% resp. 5
IST3 - Operational Research	8,3	25,0	25,0	33,3	8,3
IST6 - e-lab - Remotely controlled physics laboratories	25,0	33,3	16,7	25,0	
TOTAL	16,7	29,2	20,8	29,2	1,2

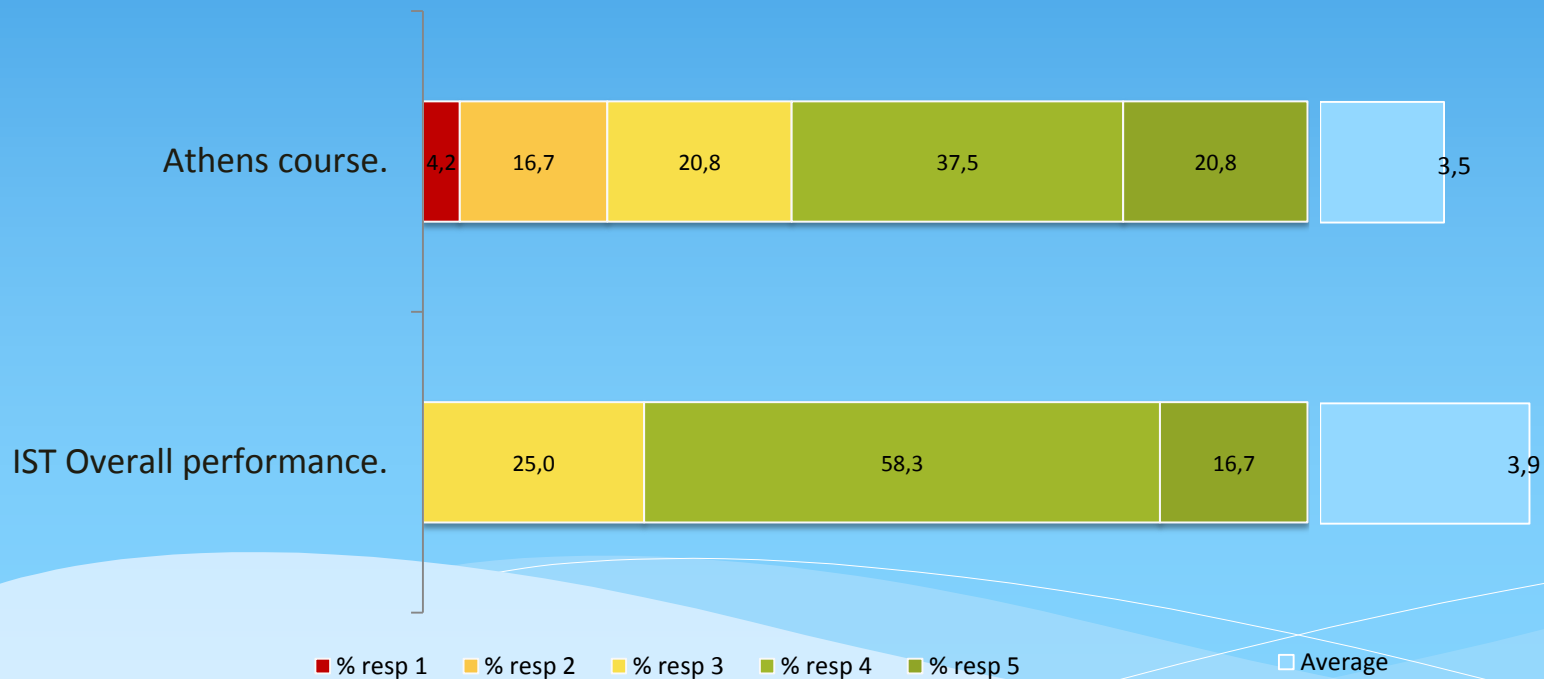


RESULTS AND ANALYSIS

6. GENERAL IMPRESSION

6.2. Overall I am satisfied with this

Scale from 1 to 5 (1= Strongly Disagree, 5=Strongly Agree)





RESULTS AND ANALYSIS

6. GENERAL IMPRESSION

6.2. Overall I am satisfied with this:

Scale from 1 to 5 (1= Strongly Disagree, 5=Strongly Agree)

6.2. Athens Course	% resp. 1	% resp. 2	% resp. 3	% resp. 4	% resp. 5
IST3 - Operational Research	8,3		16,7	66,7	8,3
IST6 - e-lab - Remotely controlled physics laboratories		33,3	25,0	8,3	33,3
TOTAL	4,2	16,7	20,8	37,5	20,8
6.2. Overall I am satisfied with this IST overall performance	% resp. 1	% resp. 2	% resp. 3	% resp. 4	% resp. 5
IST3 - Operational Research			33,3	66,7	
IST6 - e-lab - Remotely controlled physics laboratories			16,7	50,0	33,3
TOTAL			25,0	58,3	16,7



RESULTS AND ANALYSIS

6. GENERAL IMPRESSION

6.3. What did you like the most?

- The campus; the professors as persons, they were all very nice and friendly.
- The atmosphere of the university.
- Interaction with the students from other cities. Free time in the city.
- Programming on computer, case study.
- Great people, cultural weekend, Lisbon and weather.
- Autonomous work. The teachers try to do short lectures, not too complicated. They are flexible.
- NAPE group.
- The weekend and the accommodation.
- The weekend program.
- The Sun ! Then the freedom to organize our work as we wanted to.



RESULTS AND ANALYSIS

6. GENERAL IMPRESSION

6.4. What did you like the least?

- The amount of lecture time and the fact that a lot was taught, but was not needed on the exam.
- The duration of the courses.
- The Simulation course was too long.
- The lectures that were not really effective (a lot of extra information that we did not need during the exam). It was too bad that this took a lot of time that we could spend better. Also students do things with their friends from the same university.
- Simulation: no programming on computer.
- Simul. useless because not enough time.
- IST3 course has been taken too seriously by teachers comparing to courses in other cities and even IST6.
- Lecture finishing at 18h. Then when we go to the city center it is always night.
- The food in the canteen and the course since I thought we would learn how to better analyze data not just different program (octave, fitteia...) and stuff about e-lab.
- Nothing in particular, maybe the duration of course.
- Some presentations were really boring. I regret that a professor hasn't come to make his course on plasma, which was one of the things I really wanted.



RESULTS AND ANALYSIS

6. GENERAL IMPRESSION

6.5. What would you like to change?

- Not bring your own pc, more free time in the afternoon to visit city.
- Written exam, on a subject like this solving case studies are much more interesting. For example: 2 days of theory, including everything you need, 2 days of solving a case and then present it.
- It would have been nice to have 1 afternoon free.
- More flexibility to plan your time to study and do fun things. Maybe more activities with the Athens students during the week. More interaction between the students from different universities has to be stimulated.
- Simulate case study on computers.
- The timetable is too hard, finish long courses at six don't allow you to reach museums and some attractions in time.
- The laptop for me was a big problem knowing about it One week before.
- There should be more power sockets in the classroom.
- Maybe asking us to work on only one experiment instead of two, so that we can leave earlier everyday and be able to visit the city.
- Maybe change the course time from 8 30 to 4.30 or 5 in the evening so that student have more time in the evening for sightseeing.
- To start earlier the courses, and finish earlier. so that we have free time to visit museums, which close early.

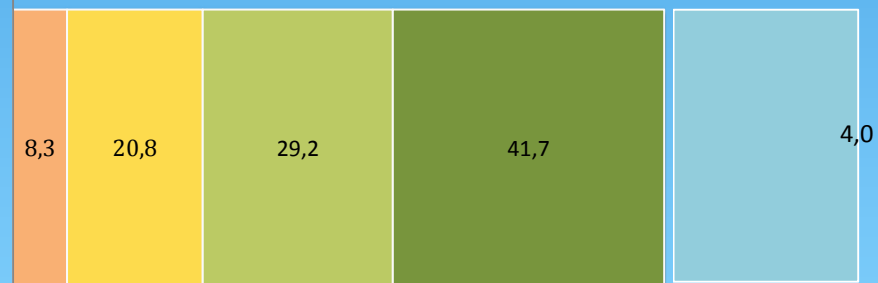


RESULTS AND ANALYSIS

6. GENERAL IMPRESSION

6.6. The Athens experience matched my initial expectations.
Scale from 1 to 5 (1= Strongly Disagree, 5=Strongly Agree)

6.6. The Athens experience matched my initial expectations:



■ % resp 1 ■ % resp 2 ■ % resp 3 ■ % resp 4 ■ % resp 5 □ Average



RESULTS AND ANALYSIS

6. GENERAL IMPRESSION

6.6. The Athens experience matched my initial expectations.
Scale from 1 to 5 (1= Strongly Disagree, 5=Strongly Agree)

6.6. The Athens experience matched my initial expectations	% resp. 1	% resp. 2	% resp. 3	% resp. 4	% resp. 5
IST3 - Operational Research		8,3	25,0	33,3	33,3
IST6 - e-lab - Remotely controlled physics laboratories		8,3	16,7	25,0	50,0
TOTAL		8,3	20,8	29,2	41,7



RESULTS AND ANALYSIS

6. GENERAL IMPRESSION

6.7. Would you recommend this ATHENS course to a friend?





CONCLUSIONS

1. MOTIVATION AND PREPARATION

96% of respondents participated in a course related to their study area.

2. COURSE ORGANISATION

The respondents consider that the objectives and requirements of this course were clear and the content of the course corresponds to the initially defined objectives (averages respectively of 3,8 and 3,5).

3. PROFESSOR RESPONSIBILITY AND SKILLS

The evaluation of this dimension was positive (averages between 3,3 and 3,7).

4. GENERAL CONDITIONS

The participants classified positively the general conditions of the Athens programme.



CONCLUSIONS

5. CULTURAL ACTIVITIES

Regarding the cultural activities, the participants were generally satisfied with the Cultural Weekend (average of 4,5), with communication between NAPE staff and participants and with NAPE's performance during the entire week (average of the participants mentioned to have liked that activity).

6. GENERAL IMPRESSION

The participants classified positively the Athens Course and the IST overall performance (averages of respectively 3,5 and 3,9). Nevertheless, the statement "this course improved my academic knowledge on the subject" obtained an average of 2,8.

96% of respondents would recommend this Athens course to a friend.